

VACUUM MIXER

VM
2.1
2.6^x

NUTRITIONAL ENRICHMENT OF PELLET AND EXTRUDED FEEDS

Volume of the coater: 8,50m³
Volume of the product filling: 6,40m³
Max. batch size: 1500kg
Min. batch volume: 0,6m³
Batch time: 10-12 min
Designed f/max neg. pressure: 20 mbar

Min fat addition: 8%
Max fat addition: 25%
Dry power additive tank volume: 0,6m³
Liquid tank volume: n.1x0,3m³ n.3x0,35m³
All the parts in contact with the product are made in Stainless Steel.
Frame to support the Vacuum system: Galvanized

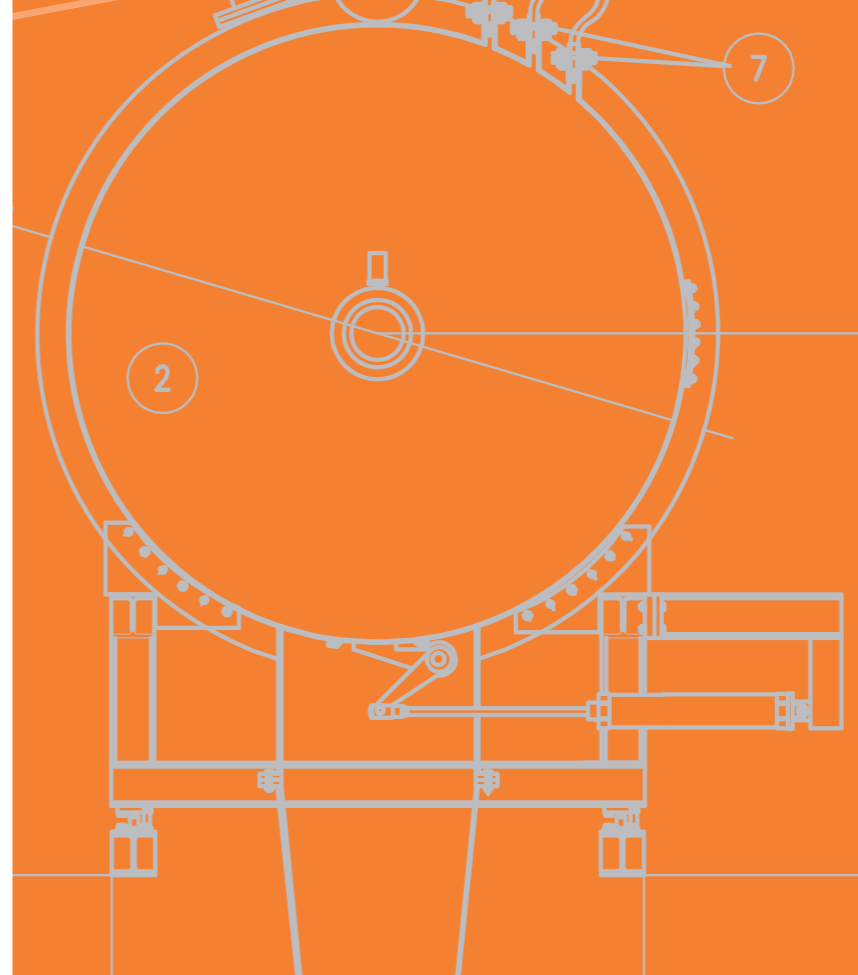


la meccanica



LA MECCANICA SRL
via nicolini, 1
35013 cittadella - pd - italy
tel: +39 049 9419000 - fax: +39 049 5972171
lameccanica@lameccanica.it

www.lameccanica.it



VM
2.1x2.6

VACUUM
MIXER

Pellet & Extruded Feeds



PELLET & EXTRUDED FEEDS

Description of the Vacuum Coating line Model VM 2.1x2.6

These lines are applied in the field of extruded feeds for:

- Fish farming
- Pets

The vacuum mixer for cold extruded feeds are used to enhance the nutritional characteristic of extruded feeds by adding oil and other additives. The liquid amount that can be batched ranges from 8% to 25%.

1. Hoppers made in stainless steel AISI 304 with level sensors and damper pneumatically driven.
The hopper are mounted on load cells

2. Vacuum Mixer made in stainless steel. Complete with paddle shaft made of stainless steel and supported at the ends with supports vacuum sealed. The mixer comes complete with dump for product, driven by pneumatic cylinders and collecting hopper complete with vacuum-tight butterfly valves.

At the entrance the mixer is equipped with vacuum-tight butterfly valves. The mixer is mounted on load cells.

3. Vacuum pumps equipped with:

- Stator made in cast iron
- Steel rotor
- Blades made in carbon fiber
- Aluminium oil tank complete with filters, air / oil separators
- Oil Cooler
- Built-in check valve
- Anti-vibration feet

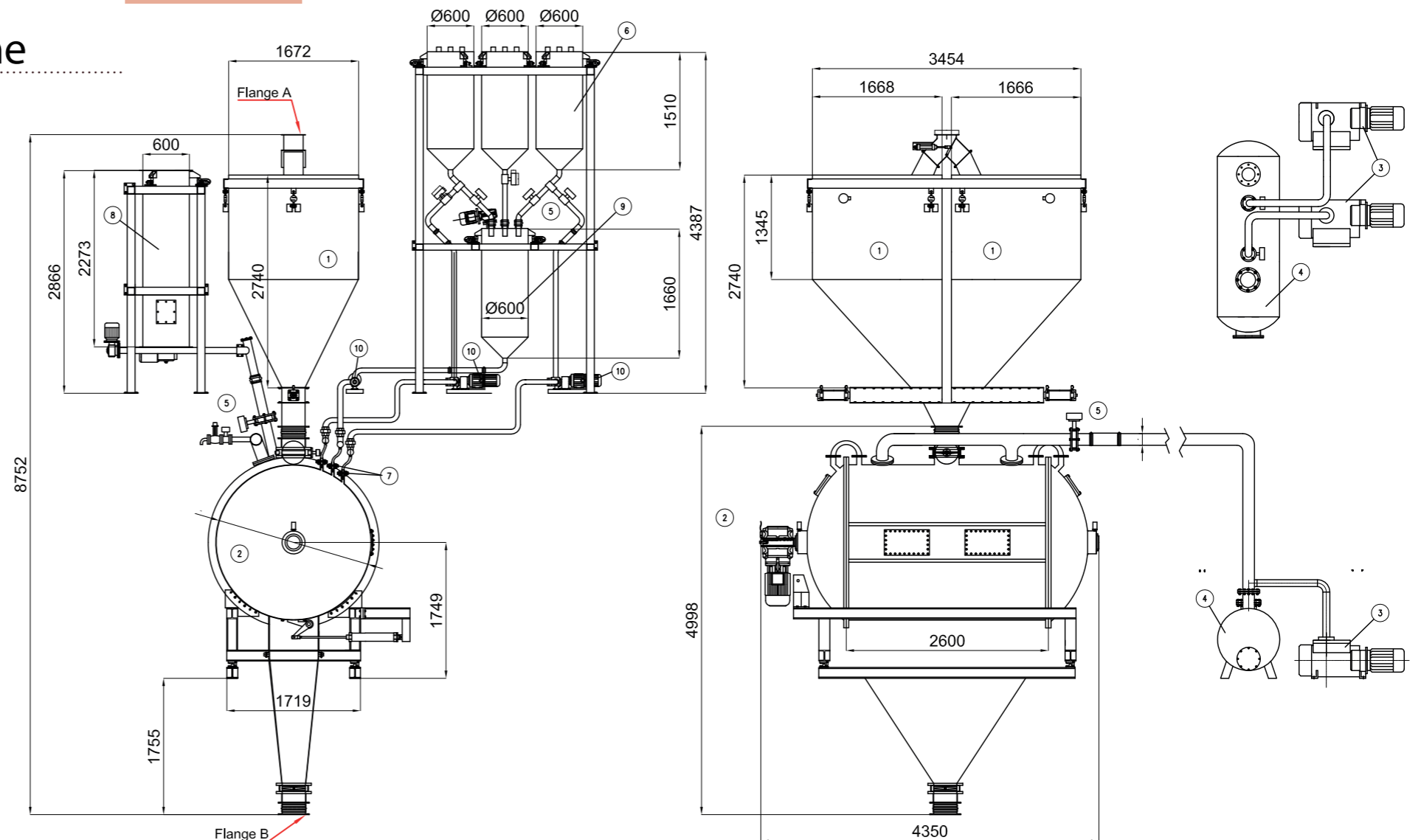
4. Protection tank for pumps made in mild steel complete with cover for inspection

5. Set of Valves:

- Butterfly valves for mixer, complete with pneumatic actuator
- Shut-off pneumatic valves for liquid
- Vacuum Sensors
- Magnetic sensors applied to the discharge bottom of the mixers
- Ball valves for vacuum pumps

6. Liquid dosing system comprising:

- Tanks for liquid mounted on load cells
- Manual shut-off valve and pneumatic valve driven pneumatically
- Pump for liquid to the mixers



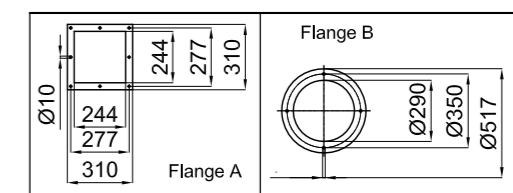
7. Set of nozzle for spray the liquid

8. Hopper for powder with flat bottom and extractor by a screw feeder mounted on load cells

Electric MMC panel complete with:

- Main switch for motors of mixer with possibility to reverse the rotation
- Main switch for the 3 vacuum pumps
- Commands for the actuators of the machine
- SIEMENS PLC
- LEARN interface card
- Industrial computer installed in the rack Type 15. "

Electrical panel dimensions: length 2400mm, height 2200mm



Item	Description
1	Hopper made in stainless AISI 304
2	Vacuum mixer 4,3 m3 motor drive directly on main shaft. Power 37 Kw, rotation speed 24 rpm
3	Vacuum pumps nr.2 x15 Kw
4	Protection tank for pumps
5	Set of valves (*)
6	Liquid dosing system capacity nr.3 x 250 Kg
7	Set of nozzle for spray the liquid
8	Powder hopper whit flat bottom and extractor by a screw feeder power 1,1 Kw
9	Tank capacity 300 Kg made in stainless AISI 304 complete with motorized stirring shaft 0,75 Kw
10	Liquid pumps nr.3 x 1,5 Kw